

The NEW ENGLAND JOURNAL of MEDICINE

ESTABLISHED IN 1812

JULY 28, 2016

VOL. 375 NO. 4

Liraglutide and Cardiovascular Outcomes in Type 2 Diabetes

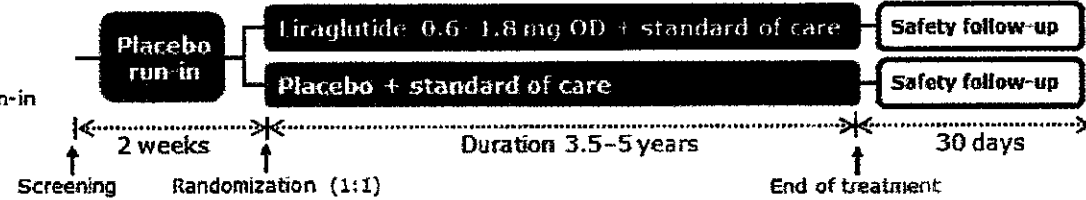
Steven P. Marso, M.D., Gilbert H. Daniels, M.D., Kirstine Brown-Frandsen, M.D., Peter Kristensen, M.D., E.M.B.A., Johannes F.E. Mann, M.D., Michael A. Nauck, M.D., Steven E. Nissen, M.D., Stuart Pocock, Ph.D., Neil R. Poulter, F.Med.Sci., Lasse S. Ravn, M.D., Ph.D., William M. Steinberg, M.D., Mette Stockner, M.D., Bernard Zinman, M.D., Richard M. Bergenstal, M.D., and John B. Buse, M.D., Ph.D., for the LEADER Steering Committee on behalf of the LEADER Trial Investigators*

>Secondary Composite Endpoint

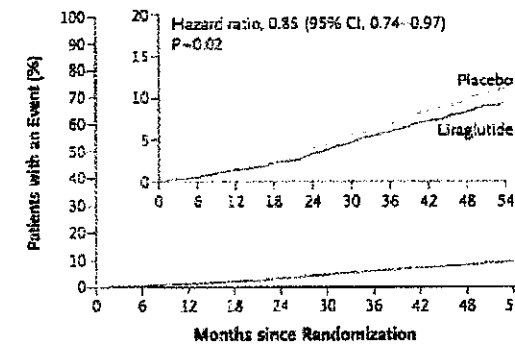
- ① 冠血管再建術、不安定狭心症or心不全による入院
- ② 全ての原因による死亡
- ③ 糖尿病性腎症
新規発症 (定義: eGFR <45ml/min/1.73m²)
血清クレアチニン値のdoubling time、透析導入
- ④ 糖尿病生網膜症
出血などの網膜病変を認めるもの
汎網膜光凝固術を要するもの
失明を来したものの
- ⑤ 悪性疾患
- ⑥ 肺炎

9340 subjects

- Double blinded
- 2-week placebo run-in

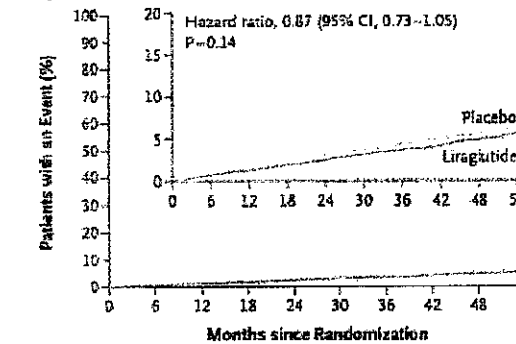


E Death from Any Cause



No. at Risk
Liraglutide 4668 4641 4599 4558 4505 4445 4382 4322 1723 484
Placebo 4672 4648 4601 4546 4479 4407 4338 4268 1709 465

F Hospitalization for Heart Failure

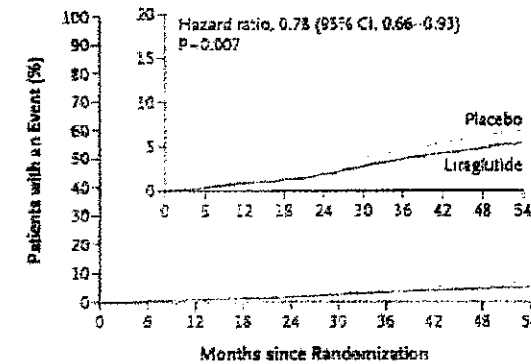


No. at Risk
Liraglutide 4668 4612 4550 4483 4414 4337 4258 4185 1662 467
Placebo 4672 4612 4540 4464 4372 4288 4187 4107 1647 442

>Primary Composite Endpoint

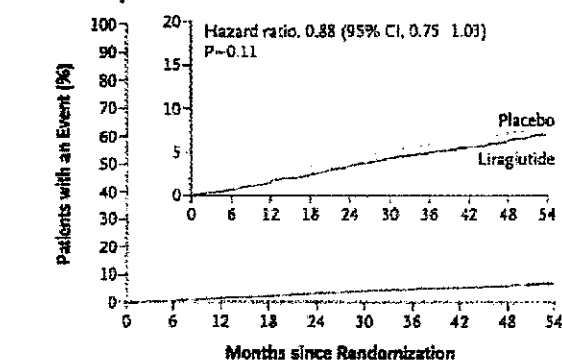
- ① 心血管死
- ② 非致死的心筋梗塞
- ③ 非致死的脳卒中

B Death from Cardiovascular Causes



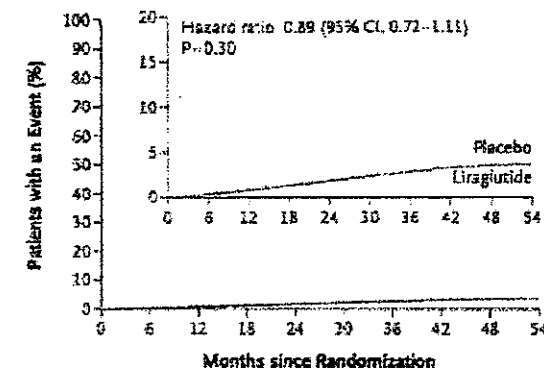
No. at Risk
Liraglutide 4668 4641 4599 4558 4505 4445 4382 4322 1723 484
Placebo 4672 4648 4601 4546 4479 4407 4338 4267 1709 465

C Nonfatal Myocardial Infarction



No. at Risk
Liraglutide 4668 4609 4531 4454 4359 4263 4181 4102 1619 440
Placebo 4672 4613 4513 4407 4301 4202 4103 4020 1594 424

D Nonfatal Stroke



No. at Risk
Liraglutide 4668 4624 4564 4504 4426 4351 4269 4194 1652 465
Placebo 4672 4622 4558 4484 4405 4314 4228 4141 1648 445

	Liraglutide (N=4668)		Placebo (N=4672)		HR	P-value
Transient ischemic attack	48 (1.0)	0.3	60 (1.3)	0.3	0.79 (0.54-1.16)	0.23
Coronary revascularization	405 (8.7)	2.3	441 (9.4)	2.5	0.91 (0.80-1.04)	0.18
Hospitalization for unstable angina pectoris	122 (2.6)	0.7	124 (2.7)	0.7	0.98 (0.76-1.26)	0.87
Hospitalization for heart failure	218 (4.7)	1.2	248 (5.3)	1.4	0.87 (0.73-1.05)	0.14
Microvascular event	355 (7.6)	2.0	416 (8.9)	2.3	0.84 (0.73-0.97)	0.02
Retinopathy	106 (2.3)	0.6	92 (2.0)	0.5	1.15 (0.87-1.52)	0.33
Nephropathy	268 (5.7)	1.5	337 (7.2)	1.9	0.78 (0.67-0.92)	0.003

Subgroup	No. of Patients	Liraglutide	Placebo	Hazard Ratio (95% CI)	P Value for Interaction
Renal function					
Severe or moderate disease					
<60 ml/min/1.73 m ²	2158	172/1116 (15.4)	223/1042 (21.4)	0.69 (0.57-0.85)	0.01
≥60 ml/min/1.73 m ²	7182	436/3552 (12.3)	471/3630 (13.0)	0.94 (0.83-1.07)	
Severe disease					0.93
<30 ml/min/1.73 m ²	224	25/117 (21.4)	26/107 (24.3)	0.89 (0.51-1.54)	
≥30 ml/min/1.73 m ²	9116	583/4551 (12.8)	668/4565 (14.6)	0.87 (0.77-0.97)	